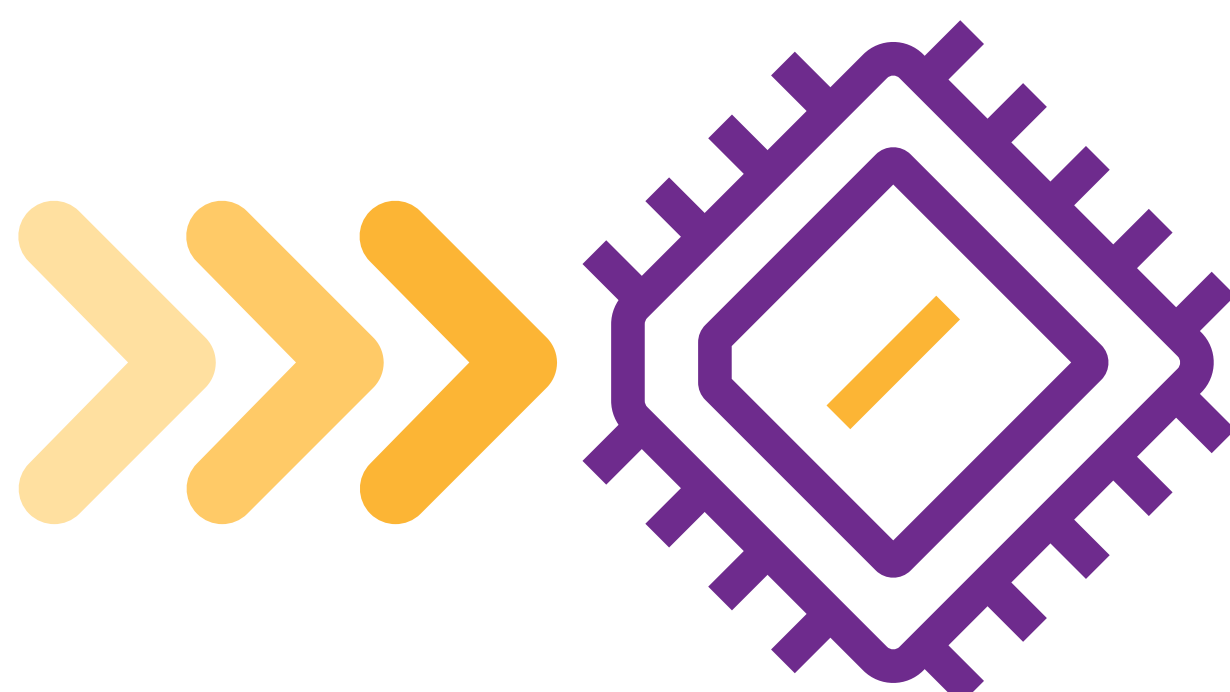


# The journey to cyber-resilience



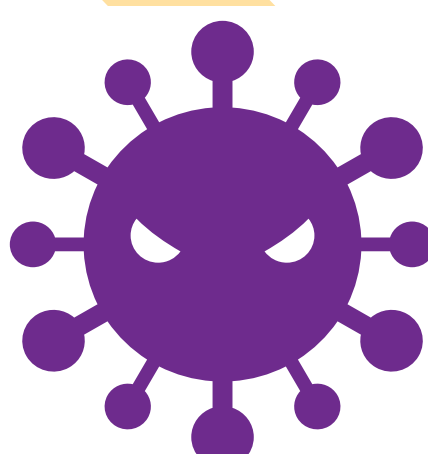
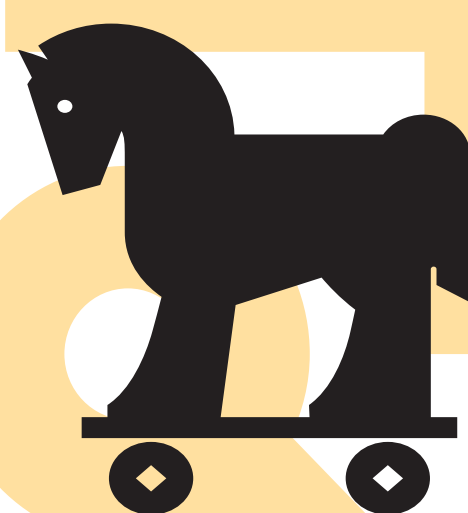
## The stark reality

### Serious cyber incidents



**1/3** of companies surveyed reported one

Most place high odds it will happen again in 12 months



## Vulnerabilities exist

Workforce resiliency needs much improvement.

### Executives who rate their cyber-resilience competencies well above average

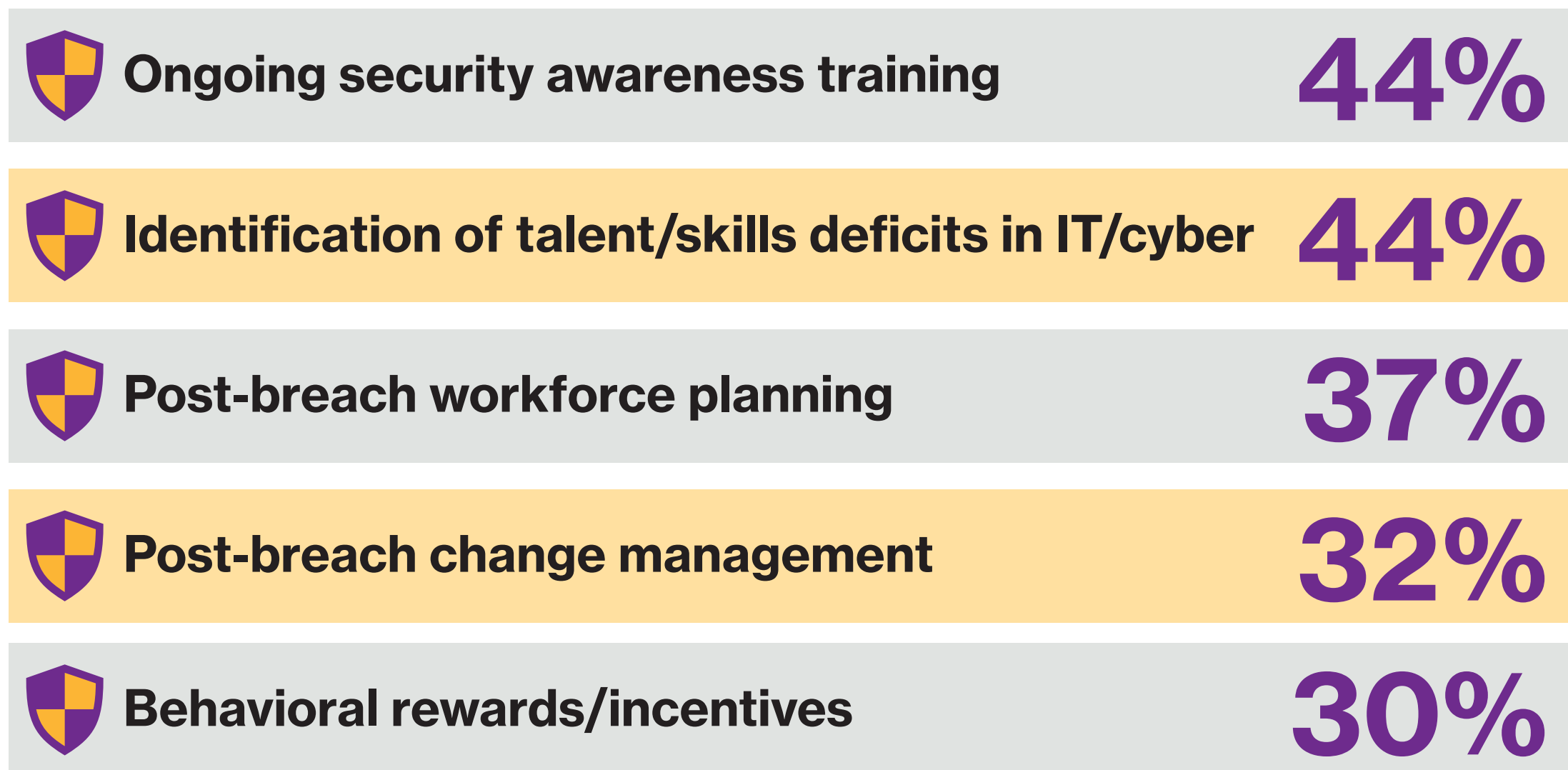


## Mitigating the human element of cyber risk

Less than half of the companies surveyed have implemented basic cyber-related HR policies.



### Policies employed:



## Actions needed

### Fix the vulnerabilities



**15%** rated their ability to develop a cyber-savvy workforce as well above average

**14%** rated their ability to identify and fill talent gaps as well above average



**16%** feel that they are well above average in allocating sufficient budget to cyber

**16%** rated their ability to retain risk vs. risk transfer at well above average



**18%** feel they are well above average in incorporating cyber into their business continuity planning

**19%** rated their incident response competency well above average