

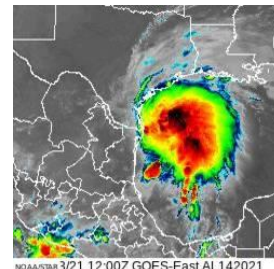
eVENT Hurricane Tracking Advisory

Willis Re

Tropical Storm Nicholas

Information from NHC Advisory 5A, 700 AM CDT Mon Sep 13 2021

On the forecast track, the center of Nicholas will pass near or just offshore the coasts of northeastern Mexico and south Texas this morning, and move onshore along the coast of south or central Texas late this afternoon or evening. Maximum sustained winds are near 60 mph (95 km/h) with higher gusts. Strengthening is forecast today, and Nicholas could reach the northwest Gulf coast as a hurricane. Weakening is anticipated on Tuesday and Wednesday while Nicholas moves over land.

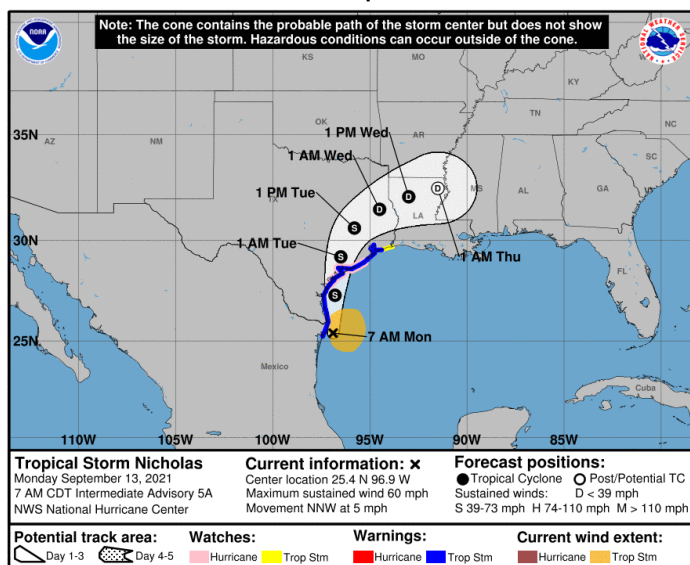


Intensity Measures		Position & Heading		U.S. Landfall (NHC)	
Max Sustained Wind Speed:	60 mph	Position Relative to Land:	40 mi SSE the Rio Grande 201 mi S of Port Oconnor Texas	Est. Time & Region:	Today on Texas
Min Central Pressure:	1001 mb	Coordinates:	25.4 N, 96.9 W		
Trop. Storm Force Winds Extent:	105 mi	Bearing/Speed:	NNW or 345 Degrees at 5 mph	Est. Max Sustained Wind Speed:	70 mph (tropical storm)

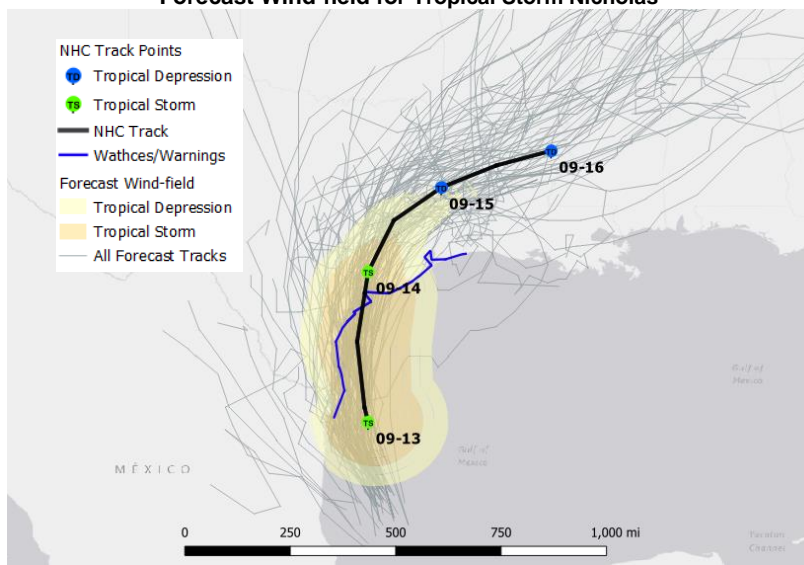
Forecast Summary

- Nicholas is expected to produce storm total rainfall of 8-16 inches, with isolated maximum amounts of 20 inches, across portions of the middle and upper Texas coastal areas through the middle of the week. Across the rest of coastal Texas into southwest Louisiana rainfall of 5-10 inches is expected. This rainfall may produce areas of considerable flash and urban flooding, especially in highly urbanized metropolitan areas. Additionally, there is the potential for isolated minor to moderate river flooding.
- Storm surge flooding could reach the following heights above ground: 3-5 ft from Port O'Connor to San Luis Pass TX including Matagorda Bay; 2-4 ft from San Luis Pass, TX to Rutherford Beach, LA including Galveston Bay; 2-4 ft from Mouth of the Rio Grande to Port O'Connor, TX; 2-4 ft on Baffin Bay, Corpus Christi Bay, Aransas Bay and San Antonio Bay; 1-3 ft from Rutherford Beach, LA to Intracoastal City, LA; 1-3 ft on Sabine Lake and Calcasieu Lake.
- Tropical storm conditions are expected to first reach the coast within the warning area in northeastern Mexico and southern Texas this morning, making outside preparations difficult or dangerous. These conditions will spread northward within the warning area through tonight. Hurricane conditions are possible in the Hurricane Watch area as early as this afternoon. Tropical storm conditions are possible within the watch area by tonight or early Tuesday. A tornado or two will be possible today into tonight across the Texas coast.
- Swells generated by Nicholas will continue affecting portions of the northwest Gulf coast through Tuesday. These swells are likely to cause life-threatening surf and rip current conditions.

Forecast Track for Tropical Storm Nicholas



Forecast Wind-field for Tropical Storm Nicholas



© Copyright 2021 Willis Limited / Willis Re Inc. All rights reserved. No part of this publication may be reproduced, disseminated, distributed, stored in a retrieval system, transmitted or otherwise transferred in any form or by any means, whether electronic, mechanical, photocopying, recording, or otherwise, without the prior written permission of Willis Limited / Willis Re Inc. Some information contained in this document may be compiled from third party sources and Willis Towers Watson (as defined below) does not guarantee and is not responsible for the accuracy of such. This document is for general information only and is not intended to be relied upon. Any action based on or in connection with anything contained herein should be taken only after obtaining specific advice from independent professional advisors of your choice. The views expressed in this document are not necessarily those of Willis Limited / Willis Re Inc., its parent companies, sister companies, subsidiaries or affiliates, Willis Towers Watson PLC and all member companies thereof (hereinafter collectively, "Willis Towers Watson"). Willis Towers Watson is not responsible for the accuracy or completeness of the contents herein and expressly disclaims any responsibility or liability, based on any legal theory, for damages in any form or amount, based upon, arising from or in connection with the reader's application of any of the contents herein to any analysis or other matter, or for any results or conclusions based upon, arising from or in connection with the contents herein, nor do the contents herein guarantee, and should not be construed to guarantee, any particular result or outcome. Willis Towers Watson accepts no responsibility for the content or quality of any third party websites that are referenced.

Kinetic Analysis Corporation's (KAC) real-time hazard and impact forecast information is provided "as is" and without warranties as to performance or any other warranties whether expressed or implied. The user is strongly cautioned to recognize that natural hazards modeling and analysis are subject to many uncertainties. These uncertainties include, but are not limited to, the uncertainties inherent in weather and climate, incomplete or inaccurate weather data, changes to the natural and built environment, limited historical records, and limitations in the state of the art of modeling, as well as limits to the scientific understanding of storm weather phenomena. Anyone making use of the hazard and impact information provided by KAC, or the information contained within, assumes all liability deriving from such use, and agrees to "hold harmless" any and all agencies or individuals associated with its creation. The user agrees to provide any subsequent users of this data with this disclaimer. The publication of the material contained herein is not intended as a representation or warranty that this information is suitable for any general or particular use.

Hazard and damage potential maps produced by Willis are based on numerical modeling results from Kinetic Analysis Corporation.

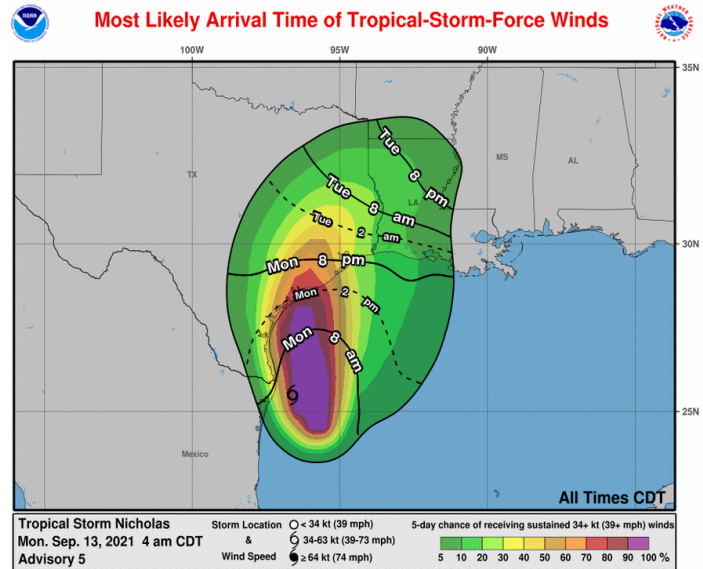


Coastal Watches and Warnings

A **Storm Surge Warning** – meaning there is a danger of life-threatening inundation, from rising water moving inland from the coastline, during the next 36 hours in the indicated locations - is in effect for: Port Aransas to San Luis Pass Texas; Aransas Bay, San Antonio Bay, and Matagorda Bay. A **Hurricane Watch** – meaning hurricane conditions are possible within the watch area - is in effect for Port Aransas to Freeport Texas. A **Tropical Storm Warning** – meaning tropical storm conditions are expected somewhere within the warning area - is in effect for: Mouth of the Rio Grande to High Island Texas; Barra el Mezquital to the U.S./Mexico border. A **Storm Surge Watch** – meaning there is a possibility of life-threatening inundation, from rising water moving inland from the coastline, in the indicated locations during the next 48 hours - is in effect for: Mouth of the Rio Grande to Port Aransas Texas; San Luis Pass Texas to Rutherford Beach Louisiana, including Galveston Bay; Baffin Bay and Corpus Christi Bay. A **Tropical Storm Watch** – meaning that tropical storm conditions are possible within the watch area - is in effect for East of High Island Texas to Sabine Pass. Interests elsewhere along the upper Texas coast and southwestern Louisiana should monitor the progress of this system.

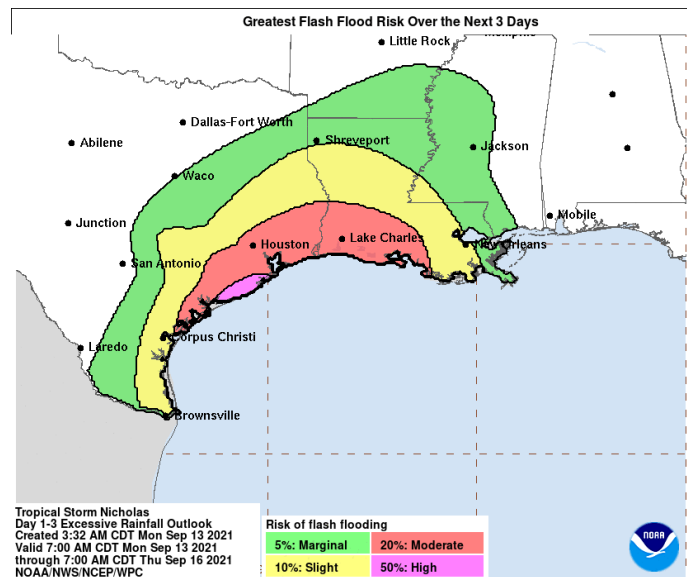
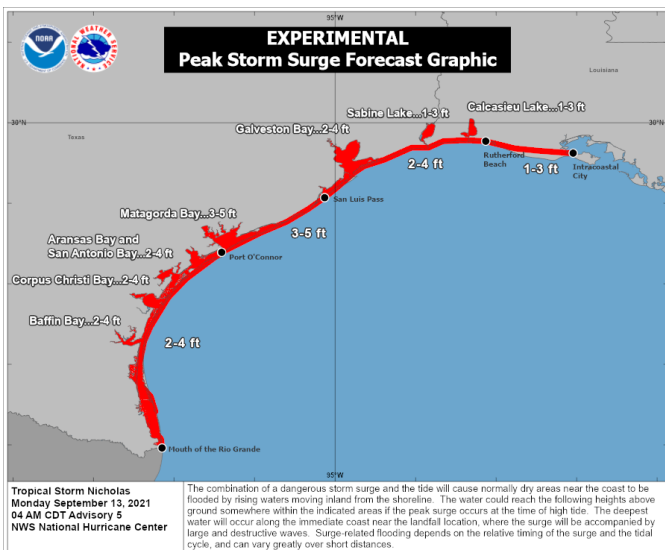
Wind Speed Probabilities and Most Likely Arrival Time of Tropical Storm Force Winds

The graphic at lower left shows Tropical-Storm-Force **Wind Speed Probabilities** through 1 AM CDT Sat Sep 18. It shows probabilities of sustained (1-minute average) surface wind speeds equal to or exceeding 34 kt (39 mph). These wind speed probabilities are based on the official National Hurricane Center (NHC) track, intensity, and wind radii forecasts, and on NHC forecast error statistics for those forecast variables during recent years. The graphic at lower right shows the **Most-Likely Arrival Time of Tropical Storm Force Winds** - the time before or after which the onset of tropical-storm-force winds is equally likely.



Peak Storm Surge and Flash Flooding Potential

The graphic at lower left shows the forecast storm surge inundation, representing the peak height the water could reach above normally dry ground somewhere within the specified areas. The graphic at lower right shows day 1-3 excessive rainfall outlook through 7 AM CDT Thu Sep 16.



Contact us

Roy Cloutier
roy.cloutier@willistowerswatson.com

Mahesh Shinde
Mahesh.Shinde@willistowerswatson.com

Akash Bhoir
Akash.Bhoir@willistowerswatson.com