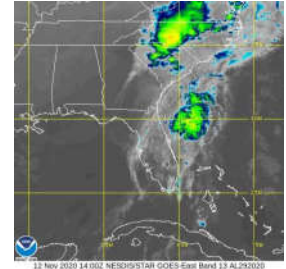




Tropical Storm Eta

Information from NHC Advisory 49, 10:00 AM EST Thu Nov 12, 2020

On the forecast track, the center of Eta will emerge into the western Atlantic by early this afternoon. The cyclone is expected to accelerate over the western Atlantic and move parallel to, but offshore of the Carolinas tonight and early Friday before heading well east of the Mid-Atlantic coast by late Friday. Maximum sustained winds are near 45 mph (75 km/h) with higher gusts. Little change in strength is forecast through early Friday. Eta could re-intensify as a non-tropical cyclone late Friday or Friday night before becoming absorbed by a larger non-tropical cyclone on Saturday.

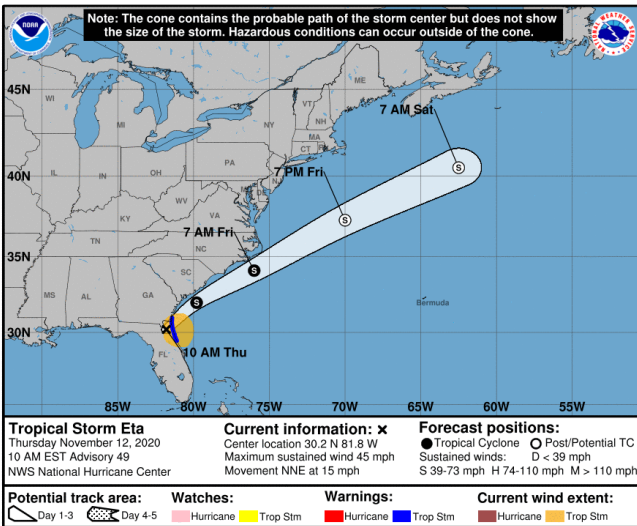


Intensity Measures		Position & Heading		U.S. Landfall (NHC)	
Max Sustained Wind Speed:	45 mph (tropical storm)	Position Relative to Land:	10 mi SW of Jacksonville FL	Est. Time & Region:	n/a
Min Central Pressure:	1003 mb	Coordinates:	30.2 N, 81.8 W		
Trop. Storm Force Winds Extent:	115 miles	Bearing/Speed:	NNE or 30 degrees at 15 mph	Est. Max Sustained Wind Speed:	n/a

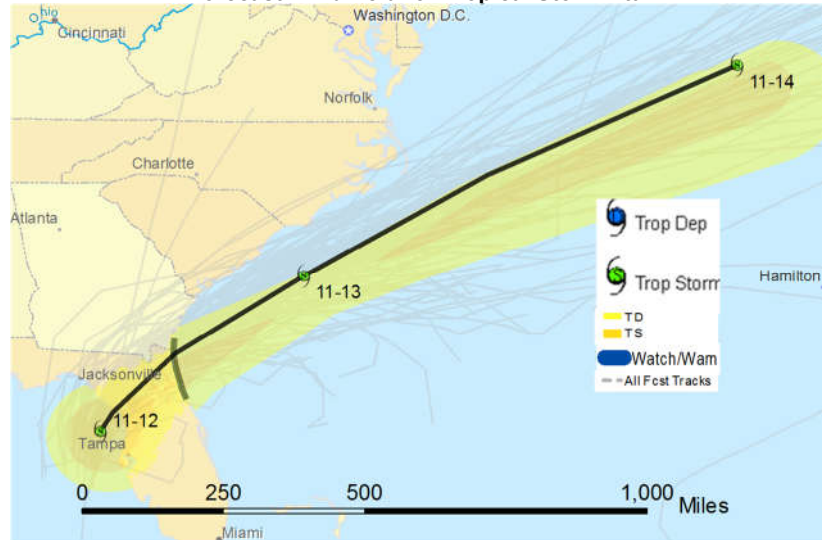
Forecast Summary

- Eta will produce an additional 1 to 3 inches of rain across portions of the Florida Peninsula through today, with isolated maximum storm total accumulations of 20 to 25 inches in South Florida. Localized flash and urban flooding will be possible across the Florida Peninsula today, especially across previously inundated areas. Minor river flooding is expected across portions of West Florida lasting into the weekend.
- Tropical storm conditions are expected in the Tropical Storm Warning area along the east coast of Florida through early this afternoon.
- Swells generated by Eta are expected to affect the Florida Gulf Coast today, and begin to affect portions of the coast of the southeastern United States later today. These swells are likely to cause life-threatening surf and rip current conditions.

Forecast Track for Tropical Storm Eta



Forecast Wind-field for Tropical Storm Eta



© Copyright 2020 Willis Limited / Willis Re Inc. All rights reserved. No part of this publication may be reproduced, disseminated, distributed, stored in a retrieval system, transmitted or otherwise transferred in any form or by any means, whether electronic, mechanical, photocopying, recording, or otherwise, without the prior written permission of Willis Limited / Willis Re Inc. Some information contained in this document may be compiled from third party sources and Willis Towers Watson (as defined below) does not guarantee and is not responsible for the accuracy of such. This document is for general information only and is not intended to be relied upon. Any action based on or in connection with anything contained herein should be taken only after obtaining specific advice from independent professional advisors of your choice. The views expressed in this document are not necessarily those of Willis Limited / Willis Re Inc., its parent companies, sister companies, subsidiaries or affiliates, Willis Towers Watson PLC and all member companies thereof (hereinafter collectively, "Willis Towers Watson"). Willis Towers Watson is not responsible for the accuracy or completeness of the contents herein and expressly disclaims any responsibility or liability, based on any legal theory, for damages in any form or amount, based upon, arising from or in connection with the reader's application of any of the contents herein to any analysis or other matter, or for any results or conclusions based upon, arising from or in connection with the contents herein, nor do the contents herein guarantee, and should not be construed to guarantee, any particular result or outcome. Willis Towers Watson accepts no responsibility for the content or quality of any third party websites that are referenced.

Kinetic Analysis Corporation's (KAC) real-time hazard and impact forecast information is provided "as is" and without warranties as to performance or any other warranties whether expressed or implied. The user is strongly cautioned to recognize that natural hazards modeling and analysis are subject to many uncertainties. These uncertainties include, but are not limited to, the uncertainties inherent in weather and climate, incomplete or inaccurate weather data, changes to the natural and built environment, limited historical records, and limitations in the state of the art of modeling, as well as limits to the scientific understanding of storm weather phenomena. Anyone making use of the hazard and impact information provided by KAC, or the information contained within, assumes all liability deriving from such use, and agrees to "hold harmless" any and all agencies or individuals associated with its creation. The user agrees to provide any subsequent users of this data with this disclaimer. The publication of the material contained herein is not intended as a representation or warranty that this information is suitable for any general or particular use.

Hazard and damage potential maps produced by Willis are based on numerical modeling results from Kinetic Analysis Corporation.

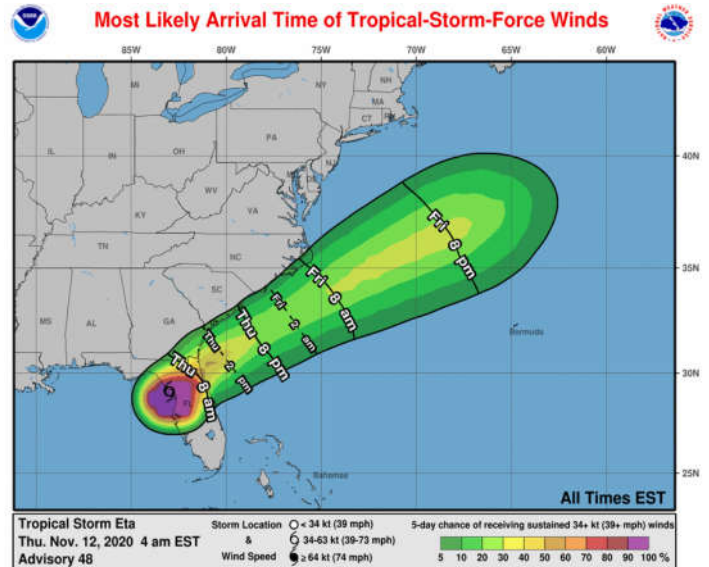
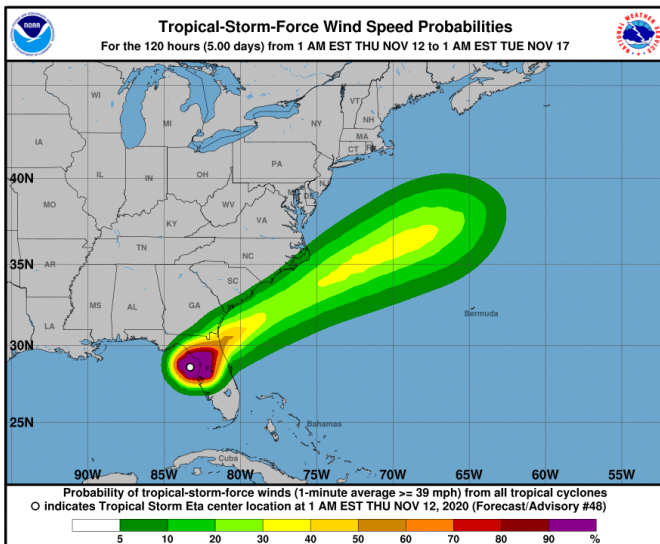


Coastal Watches and Warnings

A **Tropical Storm Warning** – meaning that tropical storm conditions are expected somewhere within the warning area - is in effect for Flagler/Volusia County Florida line northward to St. Andrews Sound Georgia.

Wind Speed Probabilities and Most Likely Arrival Time of Tropical Storm Force Winds

The graphic at lower left shows Tropical-Storm-Force **Wind Speed Probabilities** through 1 AM EST Tuesday November 17. It shows probabilities of sustained (1-minute average) surface wind speeds equal to or exceeding 34 kt (39 mph). These wind speed probabilities are based on the official National Hurricane Center (NHC) track, intensity, and wind radii forecasts, and on NHC forecast error statistics for those forecast variables during recent years. The graphic at lower right shows the **Most-Likely Arrival Time of Tropical Storm Force Winds** - the time before or after which the onset of tropical-storm-force winds is equally likely.



Summary of Atlantic Hurricane Activity to Date

Tropical Storm Activity to Date

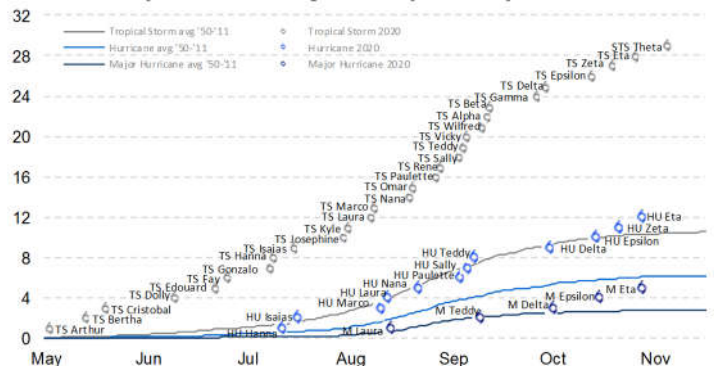
Theta is the twenty-ninth named storm of the 2020 Atlantic Hurricane Season. Last year saw seventeen named storms by November 12, including Major Hurricanes Dorian, Humberto, and Lorenzo.

2020 Tropical Storm Activity versus Average Activity

The graph below shows 2020 Atlantic Hurricane Season activity and average occurrence rates since 1950 by date, category and order. It shows, for example, that Theta became the season's 29th named storm on November 10. It also shows the average season has 10.7 tropical storms, 6.2 hurricanes and 2.7 major hurricanes (categories 3-5).

	Tropical Storms	Total Hurricanes	Cat 3-5 Hurricanes
2020 year to date (11/12/20 - 11/12/20)	29	12	5
2019 year to date (11/1/19 - 11/12/19)	17	6	3
1995-2011 season average	14.7	7.9	3.8
1950-2011 season average	10.7	6.2	2.7
2020 CSU season forecasts (Colorado State University at Aug 5, 2020)	24	12	5
2020 NOAA season forecasts (NOAA/CPC at Aug 6, 2020)	19-25	7-11	3-6

2020 Activity versus Average Activity for the years 1950 - 2011



Contact us

Roy Cloutier
roy.cloutier@willistowerswatson.com

Mahesh Shinde
Mahesh.Shinde@willistowerswatson.com

Prescott Bishop
Prescott.Bishop@willistowerswatson.com