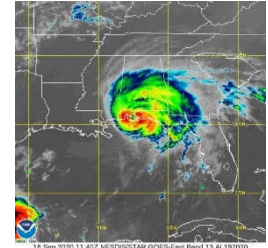




# Hurricane Sally

## Information from NHC Advisory 21A, 7:00 AM CDT Tue Sep 15, 2020

On the forecast track, the center of Sally will move across the extreme western Florida panhandle and southeastern Alabama through early Thursday, and move over central Georgia Thursday afternoon through Thursday night. Doppler weather radar data indicate that the maximum sustained winds are near 100 mph (155 km/h) with higher gusts. Weakening is expected as the center moves inland today and tonight.

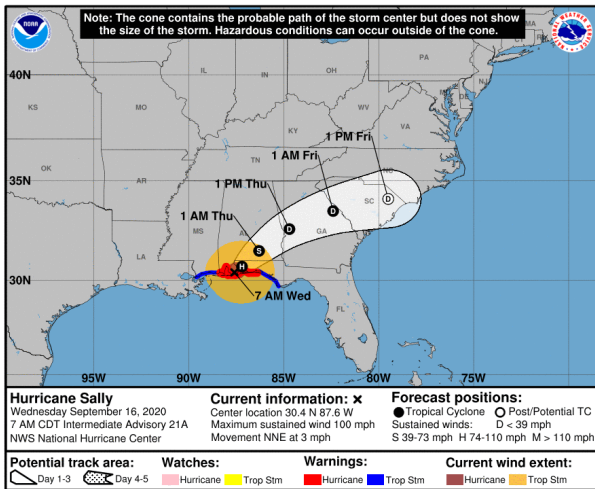


Intensity Measures		Position & Heading		U.S. Landfall (NHC)	
Max Sustained Wind Speed:	100 mph (Category 2)	Position Relative to Land:	15 mi SSE of Gulf Shores Alabama 25 mi SW of Pensacola Florida	Est. Time & Region:	This morning near the Alabama Florida border
Min Central Pressure:	967 mb	Coordinates:	30.4 N, 87.6 W		
Trop. Storm Force Winds Extent:	125 miles	Bearing/Speed:	NNE or 20 degrees at 3 mph	Est. Max Sustained Wind Speed:	100 mph (category 2)

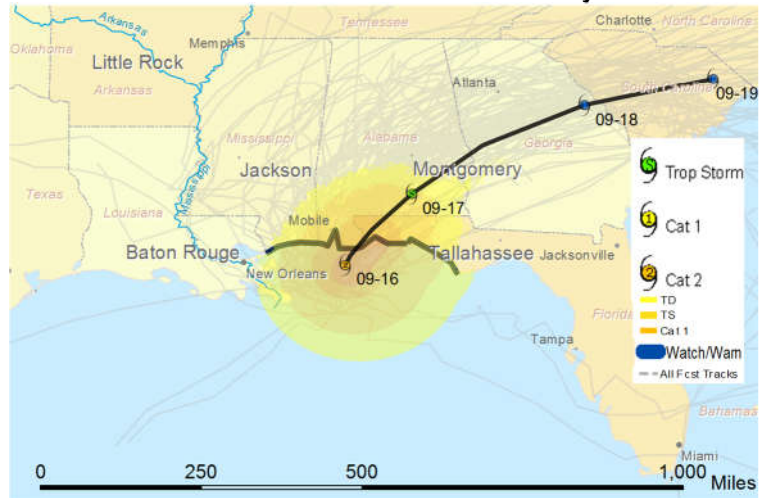
## Forecast Summary

- Through this afternoon, Sally will produce additional rainfall totals of 8 to 12 inches with localized higher amounts possible along and just inland of the central Gulf Coast from west of Tallahassee, Florida to Mobile Bay, Alabama. Storm totals of 10 to 20 inches to isolated amounts of 35 inches is expected. Historic and catastrophic flooding is unfolding. In addition, this rainfall will lead to widespread moderate to major river flooding. Sally is forecast to turn northeastward after making landfall today and move across the Southeast through Friday, producing the following rainfall totals: Southern and central Alabama to central Georgia: 4 to 8 inches, with isolated maximum amounts of 12 inches. Significant flash and urban flooding is likely, as well as widespread minor to moderate flooding on some rivers. Western South Carolina into western and central North Carolina: 4 to 6 inches, with isolated maximum amounts of 9 inches. Widespread flash and urban flooding is possible, as well as minor to moderate river flooding. Southeast Virginia: 2 to 5 inches, with isolated maximum amounts of 7 inches. Scattered flash and urban flooding is possible, as well as scattered minor river flooding.
- Storm surge flooding could reach the following heights: 4-7 ft from Dauphin Island AL to Okaloosa/Walton County FL Line; 4-7 ft from Pensacola Bay and Choctawhatchee Bay FL; 2-4 ft on Mobile Bay; 2-4 ft from Okaloosa/Walton County Line to Walton/Bay County line FL; 2-4 ft from MS/AL Border to Dauphin Island AL; 1-3 ft from Walton/Bay County line to Chassahowitzka FL including Saint Andrew Bay.
- Hurricane conditions are spreading onshore within the hurricane warning area in Florida and Alabama. Tropical storm conditions will continue in portions of the warning areas through tonight. A few tornadoes may occur today and tonight across portions of the Florida Panhandle, southern Alabama, and southwestern Georgia.

Forecast Track for Hurricane Sally



Forecast Wind-field for Hurricane Sally



© Copyright 2020 Willis Limited / Willis Re Inc. All rights reserved. No part of this publication may be reproduced, disseminated, distributed, stored in a retrieval system, transmitted or otherwise transferred in any form or by any means, whether electronic, mechanical, photocopying, recording, or otherwise, without the prior written permission of Willis Limited / Willis Re Inc. Some information contained in this document may be compiled from third party sources and Willis Towers Watson (as defined below) does not guarantee and is not responsible for the accuracy of such. This document is for general information only and is not intended to be relied upon. Any action based on or in connection with anything contained herein should be taken only after obtaining specific advice from independent professional advisors of your choice. The views expressed in this document are not necessarily those of Willis Limited / Willis Re Inc., its parent companies, sister companies, subsidiaries or affiliates, Willis Towers Watson PLC and all member companies thereof (hereinafter collectively, "Willis Towers Watson"). Willis Towers Watson is not responsible for the accuracy or completeness of the contents herein and expressly disclaims any responsibility or liability, based on any legal theory, for damages in any form or amount, based upon, arising from or in connection with the reader's application of any of the contents herein to any analysis or other matter, or for any results or conclusions based upon, arising from or in connection with the contents herein, nor do the contents herein guarantee, and should not be construed to guarantee, any particular result or outcome. Willis Towers Watson accepts no responsibility for the content or quality of any third party websites that are referenced.

Kinetic Analysis Corporation's (KAC) real-time hazard and impact forecast information is provided "as is" and without warranties as to performance or any other warranties whether expressed or implied. The user is strongly cautioned to recognize that natural hazards modeling and analysis are subject to many uncertainties. These uncertainties include, but are not limited to, the uncertainties inherent in weather and climate, incomplete or inaccurate weather data, changes to the natural and built environment, limited historical records, and limitations in the state of the art of modeling, as well as limits to the scientific understanding of storm weather phenomena. Anyone making use of the hazard and impact information provided by KAC, or the information contained within, assumes all liability deriving from such use, and agrees to "hold harmless" any and all agencies or individuals associated with its creation. The user agrees to provide any subsequent users of this data with this disclaimer. The publication of the material contained herein is not intended as a representation or warranty that this information is suitable for any general or particular use.

Hazard and damage potential maps produced by Willis are based on numerical modeling results from Kinetic Analysis Corporation.

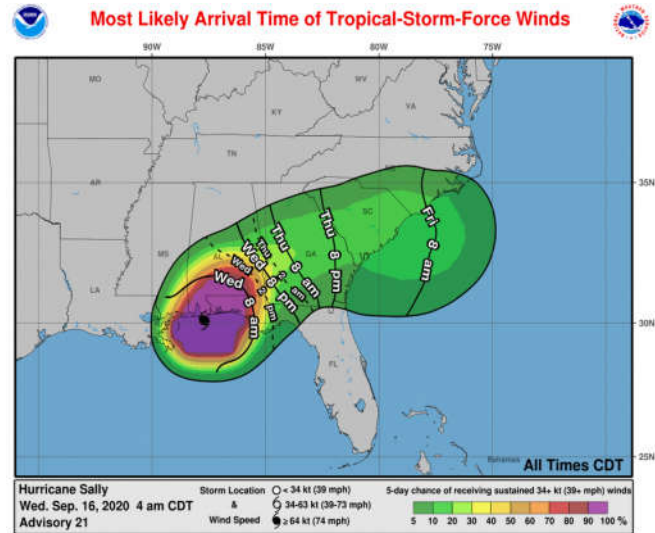
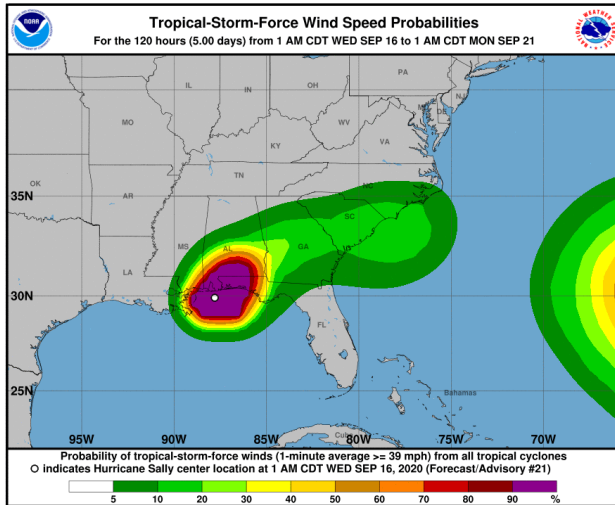


## Coastal Watches and Warnings

A **Storm Surge Warning** – meaning there is a danger of life-threatening inundation, from rising water moving inland from the coastline, during the next 12 hours - is in effect for Dauphin Island Alabama to the Walton/Bay County Line Florida. A **Hurricane Warning** – meaning that hurricane conditions are expected somewhere within the warning area - is in effect for Mississippi/Alabama border to the Okaloosa/Walton County line Florida. A **Tropical Storm Warning** – meaning that tropical storm conditions are expected somewhere - is in effect for East of the Okaloosa/Walton County line Florida to Indian Pass Florida, Mississippi/Alabama border to the Mouth of the Pearl River.

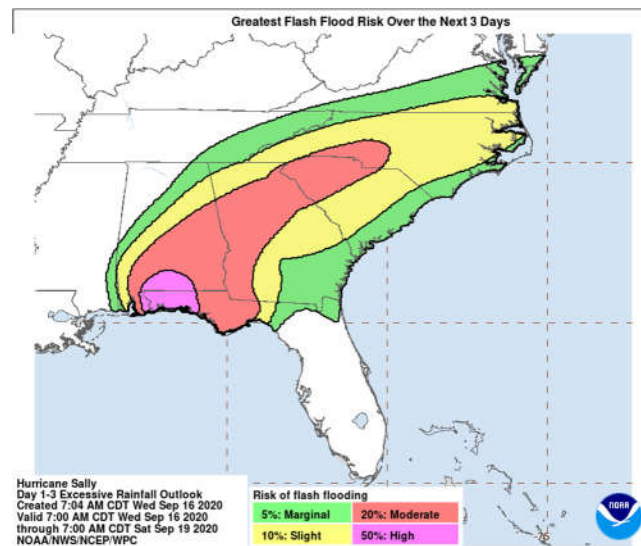
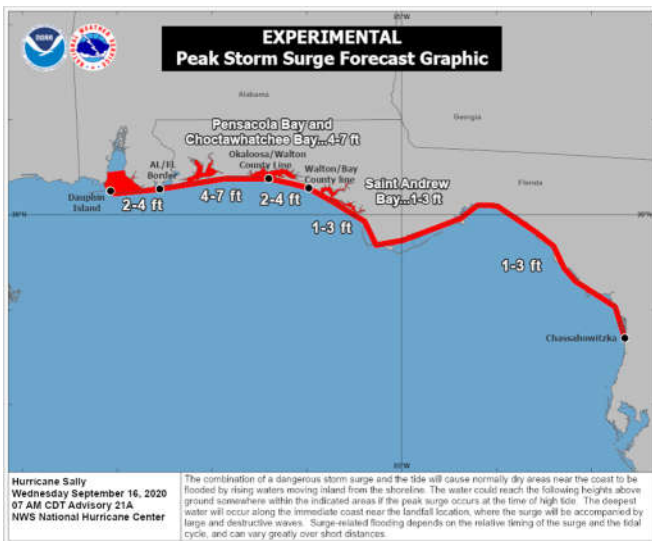
## Wind Speed Probabilities and Most Likely Arrival Time of Tropical Storm Force Winds

The graphic at lower left shows Tropical-Storm-Force **Wind Speed Probabilities** through 1 AM CDT Monday September 21. It shows probabilities of sustained (1-minute average) surface wind speeds equal to or exceeding 34 kt (39 mph). These wind speed probabilities are based on the official National Hurricane Center (NHC) track, intensity, and wind radii forecasts, and on NHC forecast error statistics for those forecast variables during recent years. The graphic at lower right shows the **Most-Likely Arrival Time of Tropical Storm Force Winds** - the time before or after which the onset of tropical-storm-force winds is equally likely.



## Peak Storm Surge and Flash Flooding Potential

The graphic at lower left shows the forecast storm surge inundation, representing the peak height the water could reach above normally dry ground somewhere within the specified areas. The graphic at lower right shows Hurricane Sally's day 1-3 excessive rainfall outlook through 7 AM CDT Saturday September 19.



### Contact us

**Roy Cloutier**  
roy.cloutier@willistowerswatson.com

**Mahesh Shinde**  
Mahesh.Shinde@willistowerswatson.com

**Prescott Bishop**  
Prescott.Bishop@willistowerswatson.com