

GOM Cruise Vessel Accumulation

A study on the affect of Covid-19 on port accumulation

April 2020



Introduction

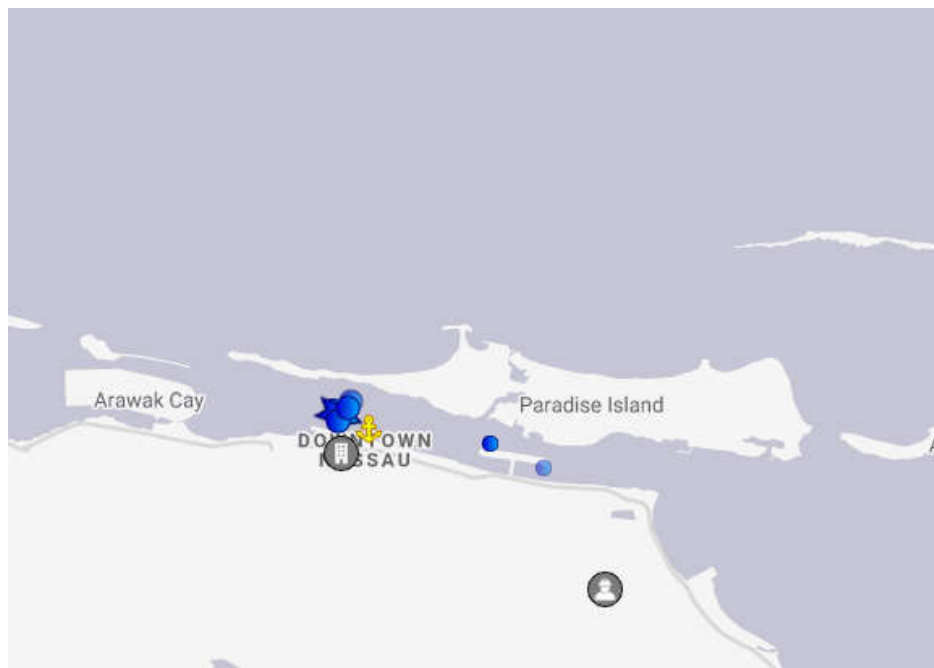
- The Gulf of Mexico was home to the 5 busiest cruise ship ports in 2019, with approximately 21.6 millions passengers between them.
- The current Covid-19 outbreak has struck the cruise industry particularly severely
- Many cruise ships that are normally fully crewed when in port are now 'warm stacking' with only a skeleton crew
 - This is likely to impair their ability to leave port quickly following a storm announcement as well as their ability to contain any fires that may breakout
- This report provides an approximate estimate of the most exposed ports within the Gulf of Mexico

"The Coast Guard statement said as of Saturday [04.04.2020] there are 114 cruise ships, carrying 93,000 crew members, either in or near U.S. ports and waters. That includes 73 cruise ships, with 52,000 crew members, moored or anchored in U.S. ports and anchorages. Another 41 cruise ships, with 41,000 crew members, are underway and close to the U.S." *



*CTV News

Port of Nassau (Bahamas)



Satellite as at 02.04.2020



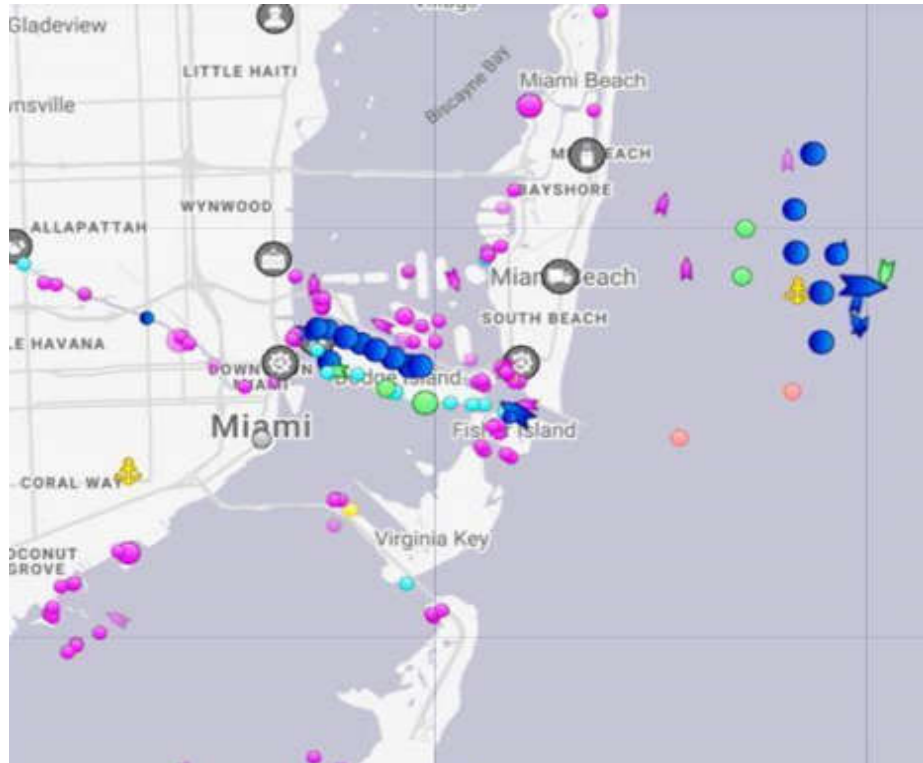
List of Cruise Vessels	Approx. Value (USD)	Vessel Location	Status
Norwegian Gem	700M	In Port	Docked
Norwegian Escape	700M	In Port	Docked
Norwegian Epic	1.2B	In Port	Docked
Norwegian Breakaway	840M	In Port	Docked
Other Major Passenger Vessels	Approx. Value USD	Vessel Location	Status
Fiesta Mail	N/A	In Port	Docked
My Atlast	N/A	In Port	Docked
NCL Escape T7	N/A	In Port	Docked

Approx. No of Ships	7
Approx No. of Ships within 8 NM Radius	7

Nassau is Bahamas' main (largest) seaport as well as country's capital city - located east of Florida USA which handles nearly 3 million cruisers annually.

The port has capacity to hold 7 cruise ships simultaneously.

Port Miami



Satellite as at 02.04.2020

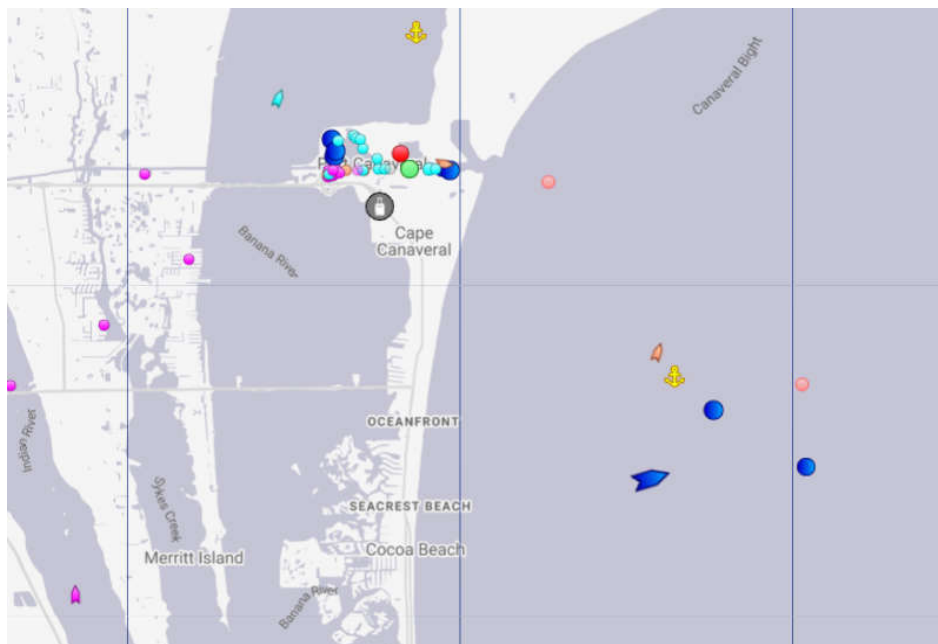


List of Cruise Vessels	Approx. Value (USD)	Vessel Location	Status
Grandeur of the Sea	200M	In port	Docked
MSC Meraviglia	950M	In port	Docked
Carnival Pride	375M	In port	Docked
Carnival Fascination	165M	In port	Docked
Norwegian Bliss	1Bn	In port	Docked
Mariner of the Seas	650M	In port	Docked
Approx. No of Ships		12	
Approx No. of Ships within 8 NM Radius		17	

Port Miami in Florida, US, is one of the world's leading hubs for global commerce and tourism, and the busiest cruise port in the world. In 2017, the port handled 5.6 million passengers with 1,185 ships docked.

It facilitates the operations of cruise lines such as Royal Caribbean, Carnival, and Norwegian, as well as being the home port of the largest cruise ship by gross tonnage, Royal Caribbean's Symphony of the Seas.

Port Canaveral



Satellite as at 02.04.2020



List of Major Cruise Vessels	Approx. Value USD	Vessel Location	Status
Carnival Magic	740M	In Port	Docked
Carnival Liberty	500M	In Port	Docked
Carnival Breeze	740M	In Port	Docked
Disney Magic	400M	In Port	Docked
Disney Dream	900M	Outside Port	Anchored
Disney Fantasy	950M	Outside Port	Anchored
Carnival Elation	275M	Outside Port	Anchored
Approx. No of Passenger Vessels			4
Approx No. of Vessels within 8 NM Radius			8

Port Canaveral is the world's 2nd busiest cruise, with over 4.5 million reported passengers passing through the port in 2016. On average 10 vessels enter the port each day, including cruise liners such as Carnival, Disney, Royal Caribbean, Norwegian, and more. *Harmony of the Seas*, the world's 2nd largest cruise vessel, uses Canaveral as it's home port.

It is not only used by cruise vessels, with the US naval vessels and cargo carriers utilising the ports. Over 6 million tonnes of cargo goes through the port each annum, both importing and exporting goods.

The channel reaches approximately 44 feet deep, 400 feet wide and 5.6km long.